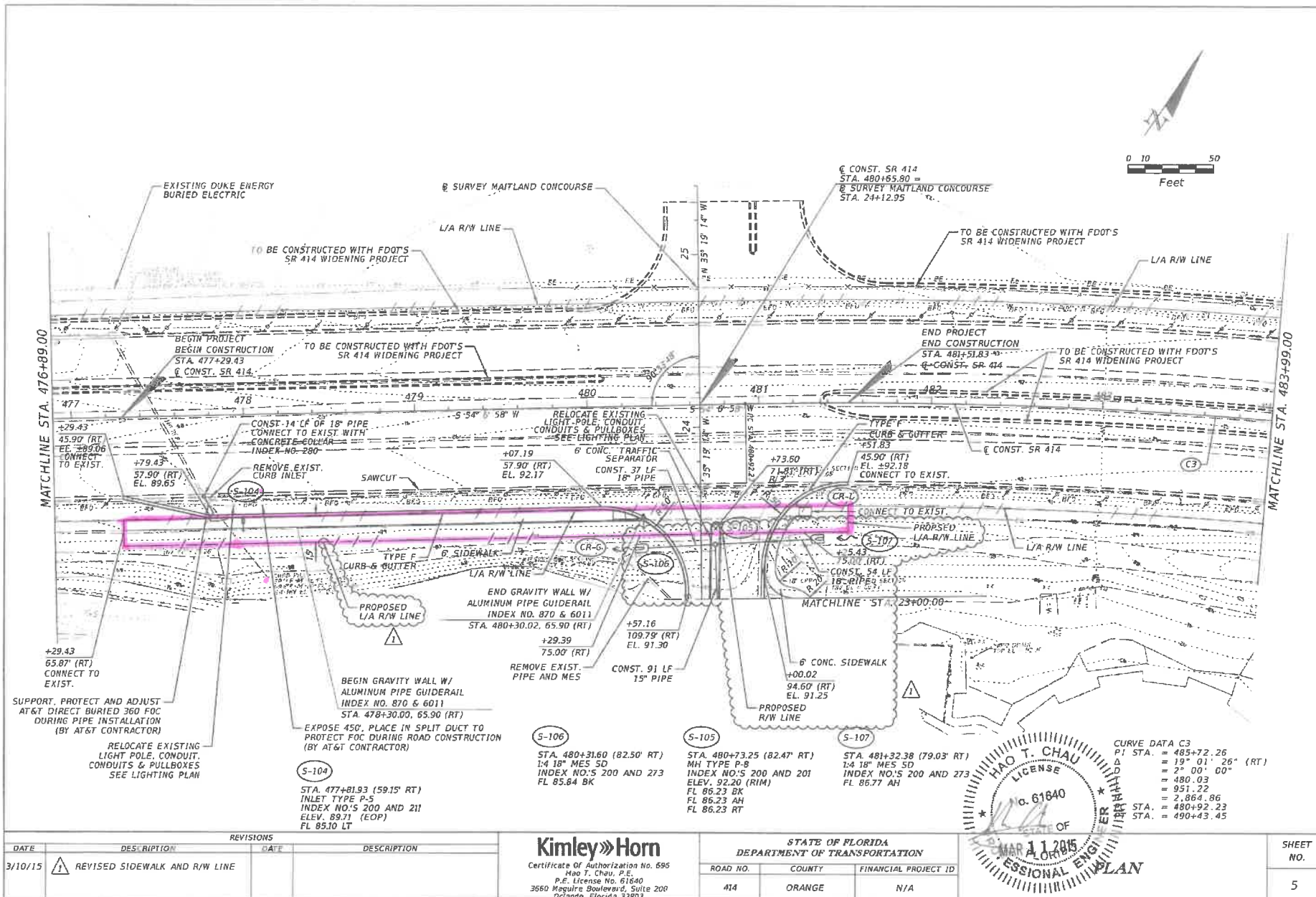


PARTIAL EASEMENT TO BE RELEASED



REVISIONS		
DATE	DESCRIPTION	DATE
3/10/15	REVISED SIDEWALK AND R/W LINE	

Kimley-Horn
 Certificate of Authorization No. 696
 Hao T. Chau, P.E.
 P.E. License No. 61640
 3660 McGuire Boulevard, Suite 200
 Orlando, Florida 32803

STATE OF FLORIDA DEPARTMENT OF TRANSPORTATION		
ROAD NO.	COUNTY	FINANCIAL PROJECT ID
414	ORANGE	N/A

HAO T. CHAU
 LICENSE
 No. 61640
 OF
 PROFESSIONAL ENGINEER
 PLAN
 MAR 11 2015
 CURVE DATA C3
 P1 STA. = 485+72.26
 = 19° 01' 26" (RT)
 = 2° 00' 00"
 = 480.03
 = 951.22
 = 2,864.86
 STA. = 480+92.23
 STA. = 490+43.45

SHEET NO.
5