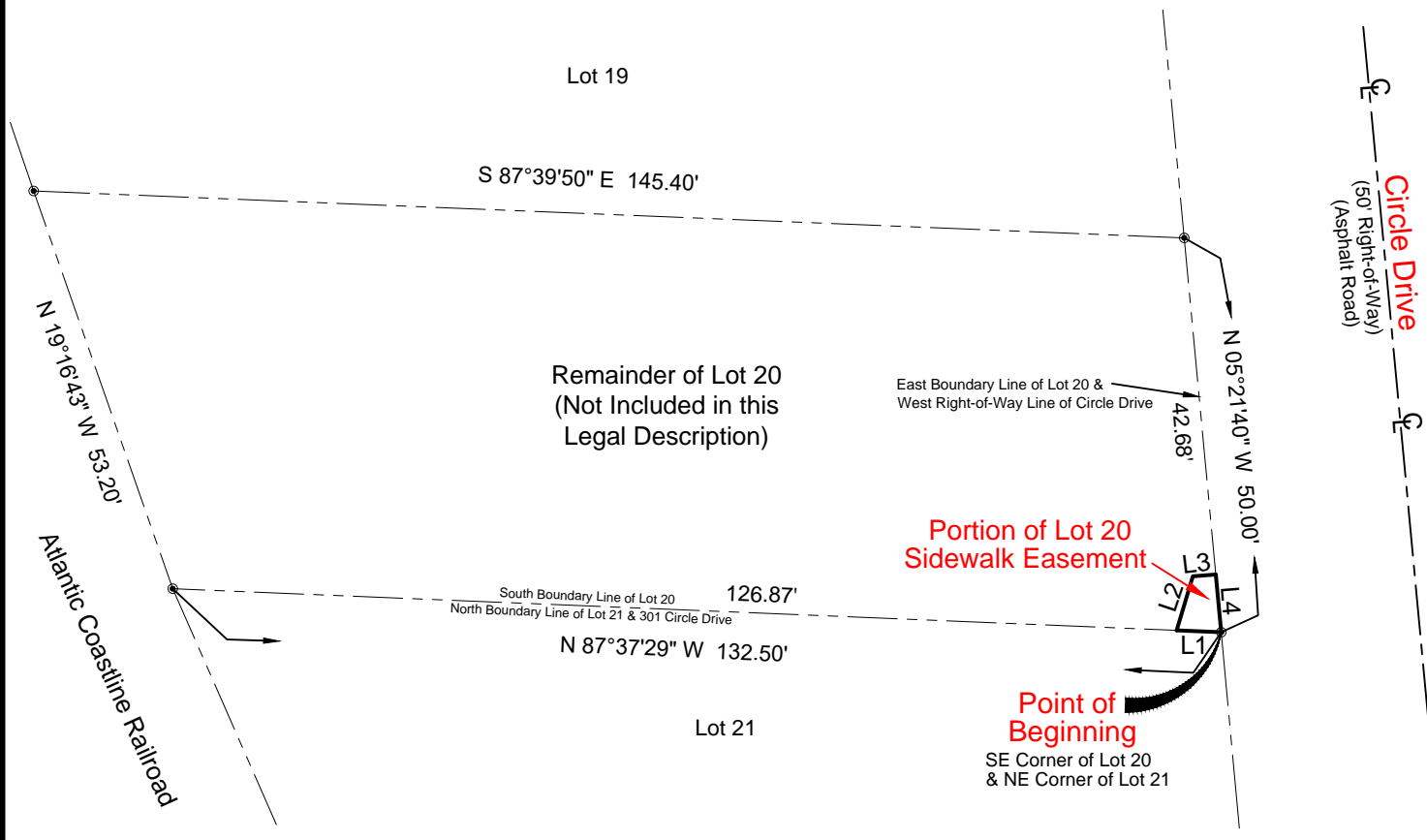


# Sketch of Description

Sheet 2 of 2



- L1  
N 87°37'29" W 5.63'
- L2  
N 16°42'17" E 7.12'
- L3  
N 85°28'38" E 2.90'
- L4  
S 05°21'40" E 7.32'



Note: Bearings Assumed  
 NOT To Scale  
 This is NOT a Survey.  
 This is ONLY a Sketch.

*Ireland & Associates  
 Surveying, Inc.*

1301 S. International Parkway Suite 2001  
 Lake Mary, Florida 32746  
 www.irelandsurveying.com  
 Office-407.678.3366 Fax-407.320.8165