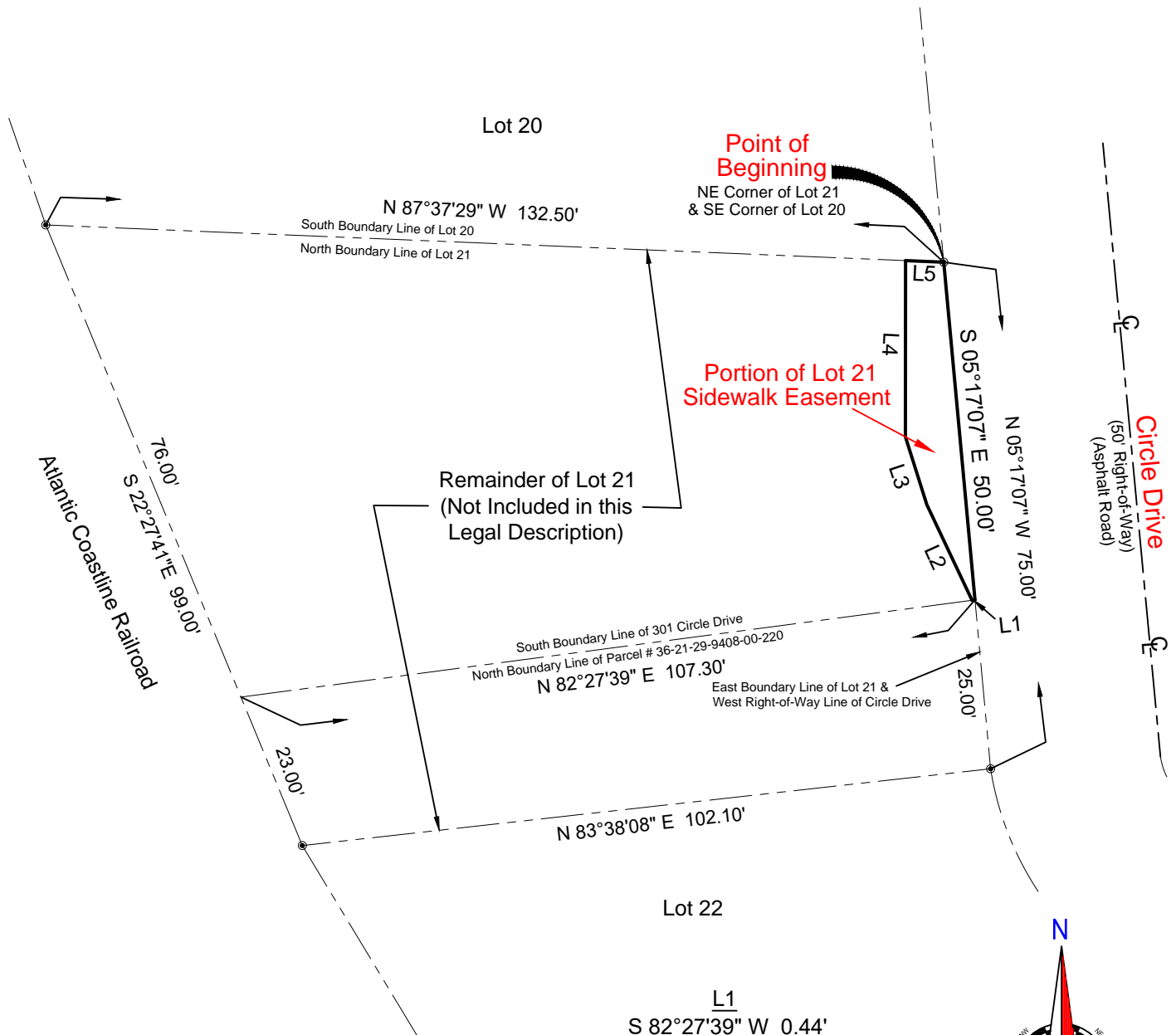


Sketch of Description

Sheet 2 of 2



- L1
S 82°27'39" W 0.44'
- L2
N 25°17'14" W 15.62'
- L3
N 17°31'28" W 10.47'
- L4
N 00°03'24" E 25.97'
- L5
S 87°37'29" E 5.63'



Note: Bearings Assumed
NOT To Scale
This is NOT a Survey.
This is ONLY a Sketch.

*Ireland & Associates
Surveying, Inc.*

1301 S. International Parkway Suite 2001
Lake Mary, Florida 32746
www.irelandsurveying.com

Office-407.678.3366 Fax-407.320.8165